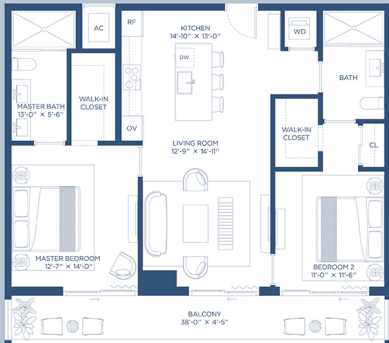


| HIGHLIGHTS | INDOOR AREA | OUTDOOR LIVING | TOTAL AREA |
|--------------------|----------------------------|---------------------------|----------------------------|
| 2 Bedrooms | 1101 ft² | 170 ft² | 1271 ft² |
| 2 Bathrooms | 102 m² | 16 m² | 118 m² |



Exclusive Sales and Marketing by Douglas Elliman Development Marketing

Netted square footages and dimensions are measured to the exterior boundaries of the exterior walls and the perimeter of interior demising walls and in fact vary from the square footage and dimensions that would be determined by using the description and definition of the "Gross" area for the building project generally only includes the interior spaces between the perimeter walls and includes all interior architectural components and other common elements. This method is generally used in sales materials and is provided to allow a prospective buyer to compare the Units with units in other condominium projects that utilize the same method. Measurements of rooms set forth on this floor plan are generally taken at the farthest points of each room unless noted otherwise and are not intended to represent actual dimensions. Accordingly, the area of the unit shown will typically be smaller than the actual unit obtained by multiplying the stated length and width. All dimensions are estimates which will vary with actual construction, and all floor plans, specifications and other development plans are subject to change and will not necessarily accurately reflect the final plans and specifications for the development. 