

HIGHLIGHTS

**3 Bedrooms**  
**3 Bathrooms**  
**Powder Room**

INDOOR AREA

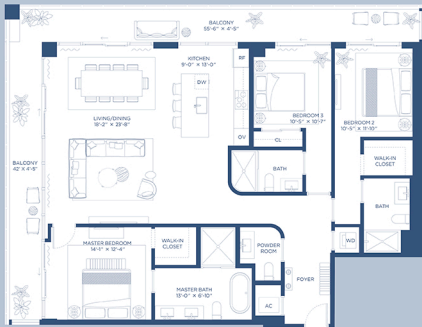
**1841 ft<sup>2</sup>**  
**171 m<sup>2</sup>**

OUTDOOR LIVING

**432 ft<sup>2</sup>**  
**40 m<sup>2</sup>**

TOTAL AREA

**2273 ft<sup>2</sup>**  
**211 m<sup>2</sup>**



Exclusive Sales and Marketing by Douglas Elliman Development Marketing

Noted square footages and dimensions are measured by the exterior boundaries of the exterior walls and the perimeter of interior demising walls and in fact vary from the square footage and dimensions that would be determined by using the description and definition of the "Gross" area built in the Declaration which generally only includes the interior square footage, the perimeter walls and includes all interior structural components and other common elements. This method is generally used in sales materials and is provided to allow a prospective home buyer to compare the Units with units in other condominium projects that utilize the same method. Measurements of Units are not built on the floor plan and are generally taken at the farthest points of each room (not at the center) and are not perfect, but are a useful, virtual representation for any unit or units. Accordingly, the area of the enclosure will typically be smaller than the product obtained by multiplying the stated length and width. All dimensions are estimates which will vary with actual construction, and all floor plans, specifications and other development plans are subject to change and will not necessarily accurately reflect the final plans and specifications for the development. 